

# Disclaimer

**This information has been developed by the Fort Lauderdale Area Office and is intended to assist employers, workers, and others as they strive to improve workplace health and safety. While we attempt to thoroughly address specific topics, it is not possible to include discussion of everything necessary to ensure a healthy and safe working environment in a presentation of this nature. Thus, this information must be understood as a tool for addressing workplace hazards, rather than an exhaustive statement of an employer's legal obligations, which are defined by statute, regulations, and standards.**

**Likewise, to the extent that this information references practices or procedures that may enhance health or safety, but which are not required by a statute, regulation, or standard, it cannot, and does not, create additional legal obligations.**

**Finally, over time, OSHA may modify rules and interpretations in light of new technology, information, or circumstances; to keep apprised of such developments, or to review information on a wide range of occupational safety and health topics, you can visit OSHA's website at [www.osha.gov](http://www.osha.gov).**

# Roofing Contractors Association of South Florida (RCASF)

## OSHA Update

---

**Condell Eastmond**  
**Area Director**  
**OSHA Fort Lauderdale Area Office**

November 20, 2024

# OSHA's Mission

**Revised Statement – 5/9/2024:** To assure America's workers have safe and healthful working conditions free from unlawful retaliation. OSHA carries out its mission by setting and enforcing standards; enforcing anti-retaliation provisions of the OSH Act and other federal whistleblower laws; providing and supporting training, outreach, education, and assistance; and ensuring state OSHA programs are at least as effective as federal OSHA, furthering a national system of worker safety and health protections.

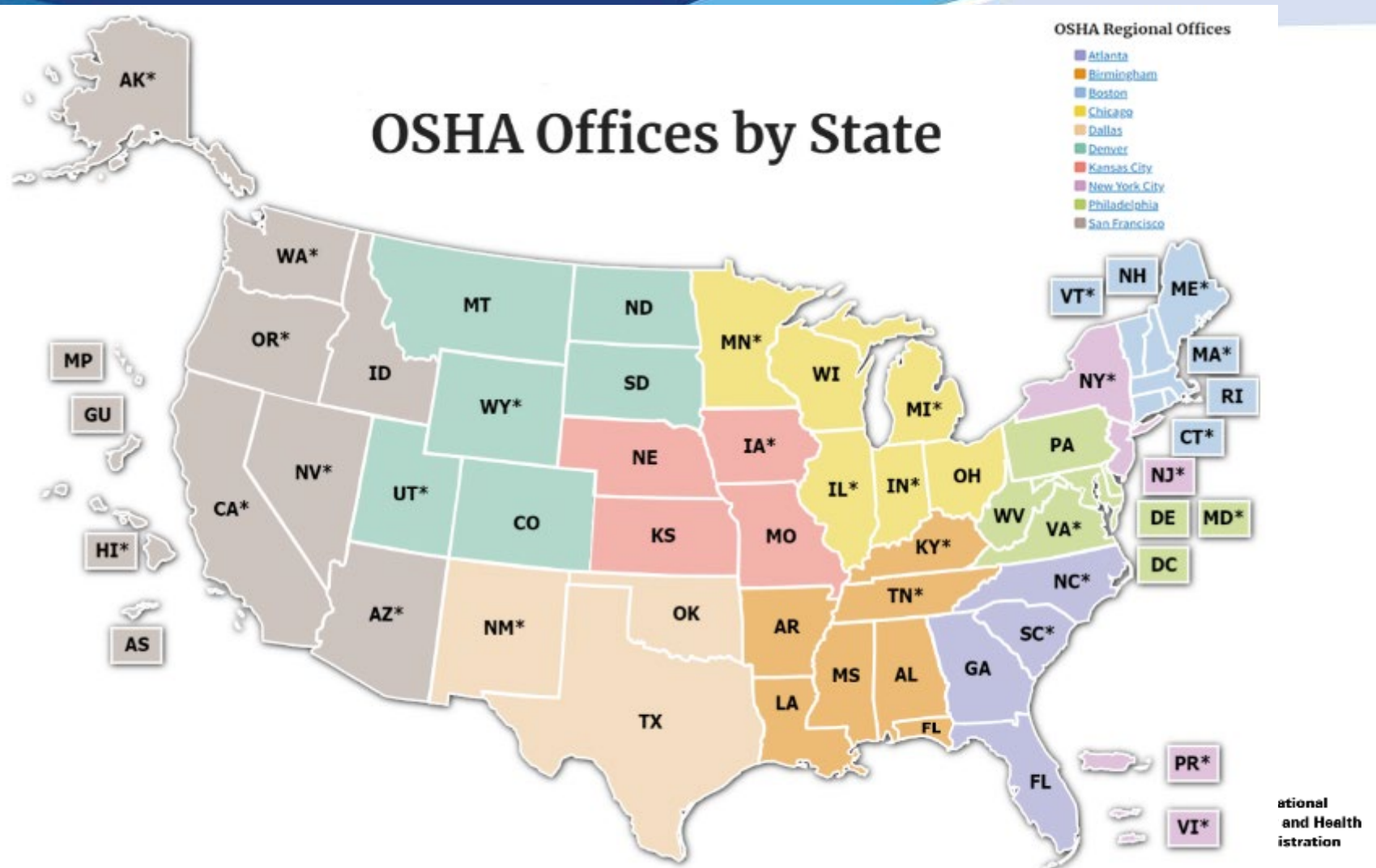
# OSHA's Balanced Approach

- Strong, fair, and effective enforcement
- Safety and health standards and guidance
- Training and Education
- Compliance assistance, Outreach, and Cooperative Programs

<https://www.osha.gov/memos/2019-09-30/revisions-occupational-safety-and-health-administration-osa-weighting-system>



# OSHA's New Regional Structure & Boundaries



# OSHA-RCASF Alliance

- Signed 11/15/2023
  - Testament to mutual goal of preventing death/injuries combining resources
  - Your commitment is crucial as we work together to ensure that every worker enjoys the right to a safe and healthy work environment.
- Accomplishments 1 year:
  - Email blasts about OSHA updates
  - Presentations/Speeches/Training
  - Educational Safety Fair – Feb 24<sup>th</sup> 2024

# OSHA's Data Update

- OSHA and its state partners, along with efforts of employers, safety & health professionals, unions, and advocates, have significantly helped reduce workplace injuries and illnesses.
- Fatalities - 38/day in **1970**, 14/day in **2022**.
- 2021 - **5,190** work-related fatalities (1 every 101 minutes)
- 2022 - **5,486** work-related fatalities (1 every 96 minutes)
- Worker injuries and illnesses rate - 10.9 to 3.7 incidents per 100 FTE workers (1972 vs. 2022)

# OSHA's Data Update (cont.)

- **Construction and Extraction:**
  - 2021 – 951 fatalities
  - 2022 - 1,056 fatalities
- 12.3 & 13.0 deaths per 100,000 FTE in 2021 & 2022 respectively
- 2021 – 2.6 million nonfatal workplace injuries and illnesses
- 2022 - 2.8 million nonfatal workplace injuries and illnesses

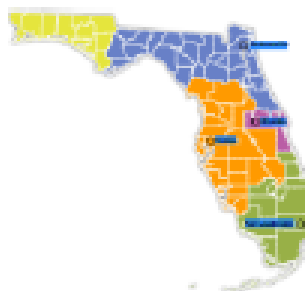
# Fatalities - Worker Characteristics

Race or Ethnic Origin	2020	2021	2022	% Change 22 vs 21
<b>White (Non-Hispanic)</b>	<b>2,898</b>	<b>3,103</b>	<b>3,167 (57.7%)</b>	<b>2.1↑</b>
<b>Black or African-American (Non-Hispanic)</b>	<b>541</b>	<b>653</b>	<b>734 (13.4%)</b>	<b>12.4↑</b>
<b>Hispanic or Latino</b>	<b>1,072</b>	<b>1,130</b>	<b>1,248 (22.7%)</b>	<b>10.4↑</b>
American Indian or Alaska Native	32	41	35 (0.6%)	
Asian	150	178	169 (3.1%)	
Native Hawaiian or Pacific Islander	8	18	9 (0.2%)	
Multi Races (Non-Hispanic)	14	11	16 (0.3%)	
Other Races or No Reported (Non-Hispanic)	49	56	108 (2%)	
Women	386	447	445 (8.1%)	
<b>Total Fatalities</b>	<b>4,764</b>	<b>5,190</b>	<b>5,486 (100%)</b>	<b>5.7↑</b>

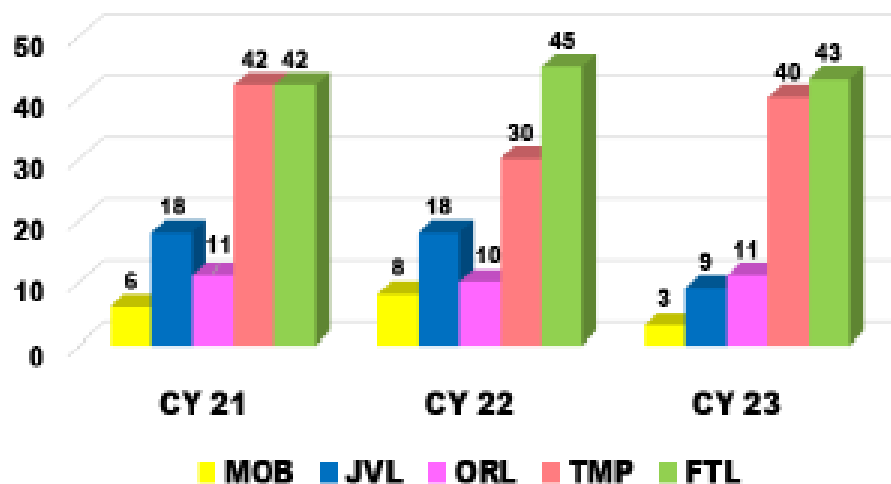
# Florida Fatalities Investigated- CY 2023

## NUMBER OF WORK-RELATED FATALITIES

**106**



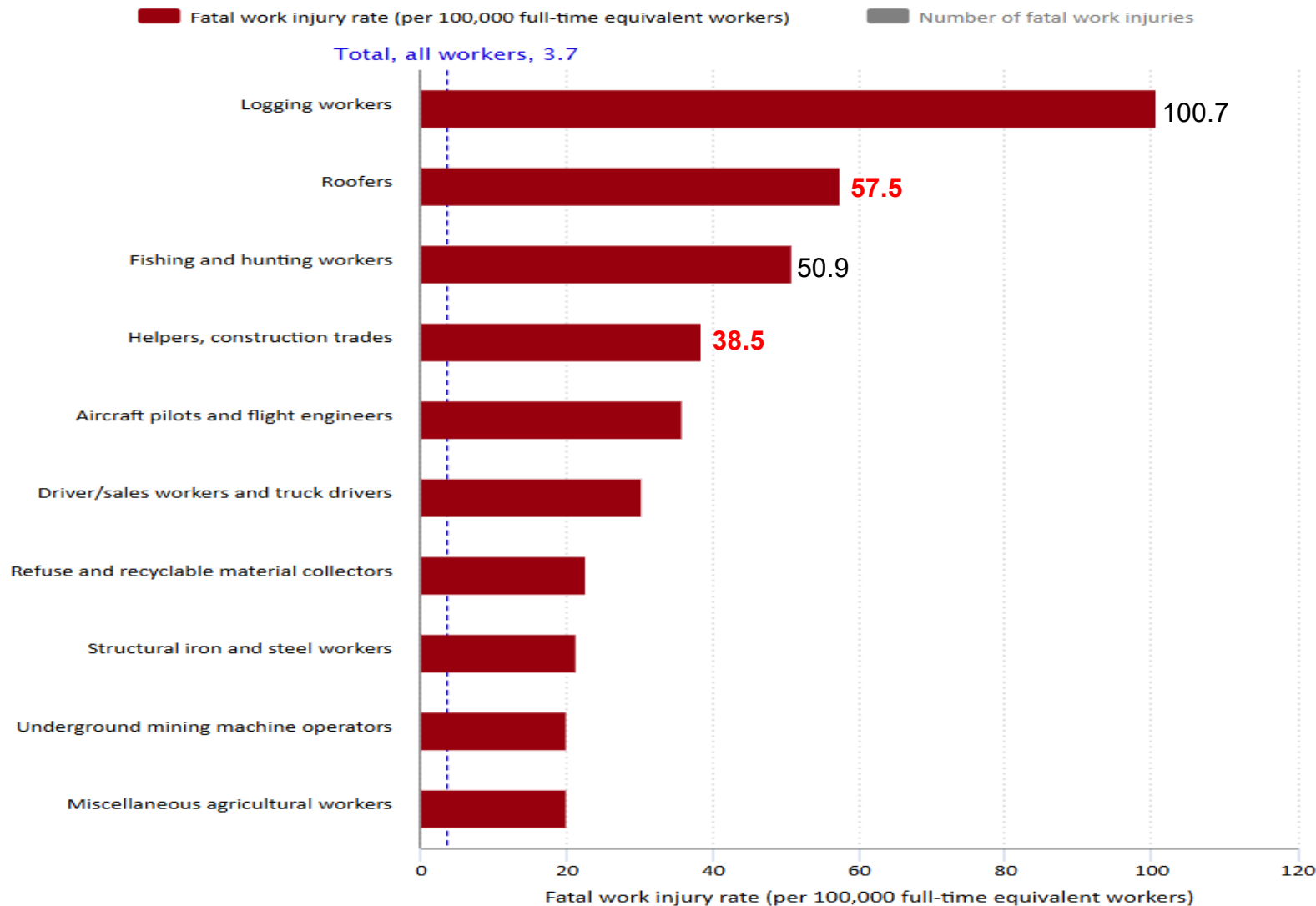
## Florida Fatality History



# Roofing Has 2<sup>nd</sup> Highest Workplace Fatality Rate - 2022

<https://www.bls.gov/charts/census-of-fatal-occupational-injuries/civilian-occupations-with-high-fatal-work-injury-rates.htm>

## Civilian occupations with high fatal work injury rates, 2022



Hover over chart to view data. Click legend to change data display.  
Source: U.S. Bureau of Labor Statistics.



# Fatal occupational injuries by occupation and event or exposure - 2020

## Construction – Roofers

TABLE A-5. Fatal occupational injuries by occupation and event or exposure, all United States, 2020 : U.S. Bureau of Labor Statistics (bls.gov)

<u>OCCUPATION(1)</u>	<u>OCCUPATION CODE(1)</u>	Total fatal injuries (number)	<u>VIOLENCE AND OTHER INJURIES BY PERSONS OR ANIMALS(3)</u>	<u>TRANSPORTATION INCIDENTS(4)</u>	Fires and explosions	Falls, slips, trips	Exposure to harmful substances or environments	Contact with objects and equipment
Total		4,764	705	1,778	71	805	672	716
<b>Roofers</b>	<b>47-2180</b>	<b>88</b>	<b>3</b>	<b>5</b>	-	<b>69</b>	<b>11</b>	-
Sheet metal workers	47-2210	7	-	-	-	-	3	-
Sheet metal workers	47-2211	7	-	-	-	-	3	-
Structural iron and steel workers	47-2220	16	-	-	-	7	-	6
Structural iron and steel workers	47-2221	16	-	-	-	7	-	6
Helpers, construction trades	47-3000	19	-	-	-	10	-	-
Helpers, construction trades	47-3010	19	-	-	-	10	-	-
Helpers--pipelayers, plumbers, pipefitters, and steamfitters	47-3015	4	-	-	-	-	-	-
Helpers--roofers	47-3016	6	-	-	-	5	-	-
Other construction and related workers	47-4000	39	-	21	-	8	-	-



# Ft. Lauderdale – FY 23 & 24

- **Fatal Falls Related to Roofing Work**
  - **FY 23: Four cases of 42 fatalities (12%)**
  - **FY 24: Five cases of 45 fatalities investigated (9%).**

# Ft. Lauderdale – FY 24 Stats

- **Enforcement:**
  - ~ 630 Inspections, including ~ 50 Inspections Heat
  - 49 Fatality Investigations
  - ~ 61% Construction
  - 12 Inspections with penalty > \$40K (2 over \$100K)
    - 75% construction
  - 33 Willful & Repeat Citations...max penalty \$163K
  - Over 2000 UPAs processed

# Florida Fatalities Investigated - CY 2023

## FATALITIES BY INDUSTRY SECTORS

<b>CONSTRUCTION</b> (236115—238990) Majority occurred in the Specialty Trade Contractors	<b>51%</b>
<b>GENERAL INDUSTRY</b> (423220—811310) NON MANUFACTURING	<b>18%</b>
<b>LAWN AND GARDEN CARE</b> (561730)	<b>13%</b>
<b>GENERAL INDUSTRY</b> (321911—336611) MANUFACTURING	<b>8%</b>
<b>AGRICULTURE</b> (111219—115115) Agricultural Production Crops	<b>5%</b>
<b>OIL &amp; GAS OPERATIONS</b> (213112)/ <b>ELECTRICAL POWER DISTRIBUTION</b> (221122)/ <b>WASTE DISPOSAL</b> (562111)	<b>5%</b>

# **Top Ten Violations in General Industry FY 2023**

- 1. Hazard Communication (1910.1200)**
- 2. Powered Industrial Trucks (1910.178)**
- 3. Respiratory Protection (1910.134)**
- 4. General Requirements, Electrical (1910.303)**
- 5. Wiring methods, components, and equipment for general use (1910.305)**
- 6. Maintenance, safeguards, and operational features for exit routes (1910.37)**
- 7. Control of Hazardous Energy, Lockout/Tagout (1910.147)**
- 8. Portable Fire Extinguishers (1910.157)**
- 9. General Requirements, Personal Protective Equipment (1910.132)**
- 10. OSH ACT – General Duty Clause**



# **CONSTRUCTION INDUSTRY**

## **Top Ten Violations Construction FY 23**

- 1. Fall Protection – General Requirements (1926.501)**
- 2. Ladders (1926.1053)**
- 3. Scaffolding (1926.451)**
- 4. Fall Protection – Training Requirements (1926.503)**
- 5. Eye and Face Protection (1926.102)**
- 6. Head Protection (1926.100)**
- 7. General Safety and Health Provisions (1926.20)**
- 8. Abatement Verification (1903.19)**
- 9. Specific Excavation Requirements (1926.651)**
- 10. Aerial Lifts (1926.453)**

# Top Ten Violations for NAICS 238160 (Roofing Contractors) Oct 2023-Sept 24

[https://www.osha.gov/ords/imis/citedstandard.naics?p\\_esize=&p\\_state=FEFederal&p\\_naics=238160](https://www.osha.gov/ords/imis/citedstandard.naics?p_esize=&p_state=FEFederal&p_naics=238160)



	Violation	Penalty	# Citations	Standard #	% of total Vio in that Naics
1	Duty to have fall protection	\$24,491,961	3,608	1926.501	35%
2	Ladders	\$5,894,870	1,686	1926.1053	16%
3	Fall Protection. Training requirements.	\$2,640,007	1,266	1926.503	12%
4	Eye and face protection	\$3,606,362	980	1926.102	10%
5	General safety and health provisions	\$1,732,018	481	1926.2	5%
6	Abatement verification	\$145,964	359	1903.19	4%
7	Head protection	\$962,833	333	1926.1	3%
8	Fall protection systems criteria and practices	\$805,323	327	1926.502	3%
9	Scaffolds, General Requirements	\$601,753	208	1926.451	2%
10	Stairways and Ladders. Training requirements.	\$171,284	157	1926.1060	2%

# Regional Emphasis Programs

- Construction, CPL 23/11 (only for State Programs)
- Federal Agencies, CPL 20/08
- Ship Boat Build and Repair, CPL 20/04
- Sanitation and Clean-up operations, CPL 20/06
- Electrical Hazards, CPL 20/03
- Noise Hazard, CPL 20/05
- Landscaping and Horticultural Services, CPL 20/02
- Poultry Processing Facilities, CPL 20/09
- Powered Industrial Trucks (Forklifts), CPL 21/07
- Maritime, CPL 23/12
- Safety hazards in Auto Parts, CPL 23/10



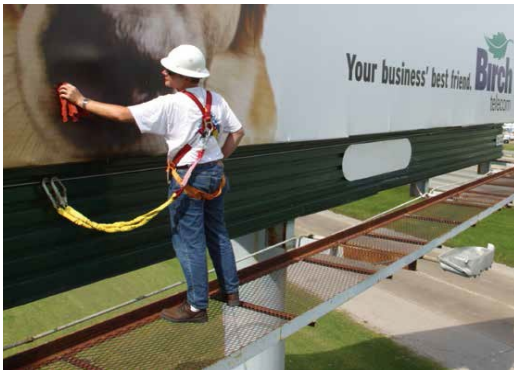
# National Emphasis Programs (NEPs):

- Combustible Dust - CPL 03-00-008
- Fall Prevention / Protection – CPL 03-00-025 (Inspections Aug. 2023)
- Amputations in Mfg. Ind. - CPL 03-00-022
- Heat Hazard - CPL 03-00-024 (Enforcement April 2022)
- Hexavalent Chromium - CPL 02-02-076
- Lead - CPL 03-00-009
- Primary Metal Industries - CPL 03-00-018
- Process Safety Management (PSM Covered Chemical Facilities)  
CPL 03-00-021
- Shipbreaking - CPL 03-00-020
- Silica - CPL 03-00-023
- Trenching & Excavation - CPL 02-00-161
- Warehousing CPL 03-00-026 (Inspections - 10/13/23)



# FALL NEP – Applies OSHA-wide

- Inspections under this NEP started on August 1, 2023.
- All construction inspections related to falls will be conducted pursuant to this NEP.
- All other inspections related to falls will be conducted pursuant to this NEP.



# NEP Warehousing and Distribution Center Operations

Inspections under this NEP started on October 13, 2023

- This NEP covers both programmed and unprogrammed safety inspections.
  - Inspections based upon fatalities/catastrophes, complaints, or referrals related to establishments covered under this NEP shall be expanded to **comprehensive safety inspection**.
- Inspections under this NEP:
  - Will not include postal or package transportation/delivery to residences and businesses.



# HEAT NEP

## Outdoor & Indoor



- Applies to indoor and outdoor worksites (See Appendix A of Directive)
- Establishes a trigger “Heat priority days” when Heat Index exceeds 80°F
- Acclimatization and re-acclimatization program.
- Prioritizes on-site inspections for complaints, injuries & hospitalizations.
- Heat Stress Plan site-specific.

# Injury Tracking Application (ITA) Final Rule Requirements

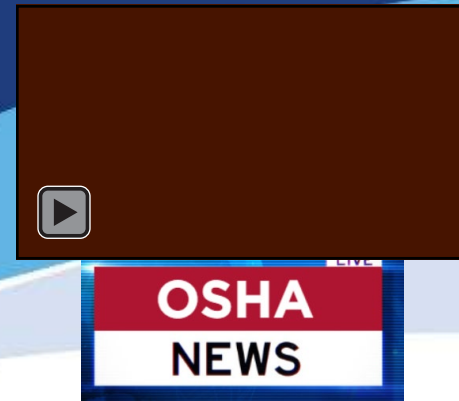
- Establishments **with 100 or more** employees in the **highest-hazard industries** must electronically submit information from their **Forms 300 Log and 301 Incident Report**, in addition to in the OSHA Form 300A, once per year. The criteria for the designated industries are listed in [Appendix B to Subpart E of 29 C.F.R. Part 1904](#).
- Establishments with **20 to 249** employees in **certain industries** will continue to be required to electronically submit information from their **OSHA Form 300A annual summary** to OSHA once a year.
- Establishments with **250 or more** employees in industries that are **routinely required** to keep injury and illness records, must continue to electronically submit information from their **Form 300A Annual Summary**. Listed in appendix A to subpart E.

# What's New?



- **Worker Walkaround Representative Designation Process:** Rule published on 4/1/2024 and becomes effective: 05/31/24. Clarifies the rights of employees to authorize a representative to accompany an OSHA Compliance Officer during an inspection of their workplace (Std 1903.8)
- **OSHA is amending the Hazard Communication Standard (HCS)** to conform to the United Nations' Globally Harmonized System of Classification and Labelling of Chemicals (GHS), primarily Rev. 7, address issues that arose during the implementation of the 2012 update to the HCS, and provide better alignment with other U.S. agencies and international trading partners, while enhancing the effectiveness of the standard. This final rule is effective July 19, 2024. (Std. 1910.1200)
- **OSHA proposed a new Emergency Response Standard** to replace the Fire Brigades Standard. This standard would cover emergency responders, including firefighters, emergency medical service providers, and members of workplace emergency response teams, both paid and volunteer. The proposal included technical search and rescue for the emergency responders (Std. 1910.156)

# What's New? (cont.)




- **OSHA is proposing to revise its Personal Protective Equipment (PPE) standard in construction** to include an explicit requirement that PPE must fit workers properly and is seeking comments regarding the proposed revision (Std. 1926.95). The reviewing public comment period closed on September 18, 2023, and OSHA is currently reviewing comments.
- **OSHA is proposing a Heat Illness Prevention Standard:** On June 11, 2024, OSHA submitted its draft proposed standard on Heat Injury and Illness Prevention in Outdoor and Indoor Work Settings to the Office of Management and Budget's (OMB) Office of Information and Regulatory Affairs (OIRA) for review by Executive Order (EO) 12866. The proposing rule is open for comments until December 30, 2024.
- **OSHA launches Severe Injury Report (SIR) Dashboard** on October 15, 2024. The SIR dashboard allows users to search and download data by year, industry, state, establishment name, and Occupational Injury and Illness Classification System codes. The dashboard includes all severe injuries reported by employers covered under Federal OSHA since 2015. You can learn how severe injuries happen in their industries and use this resource to help prevent workplace injuries at your job site.



# Ft. Lauderdale – FY 24 Stats

- **Compliance Assistance Accomplishments:**
  - **Over 200 Compliance Assistance Activities**
  - **Five (5) Alliances - RCASF, SFMA, Mexican Consulate, El Salvador, ICA,**
  - **Six (6) Partnerships – Moss, Kaufman Lynn (2), NV2A-Dragados, Lemartec, United Insulation Structures**

# Looking Ahead - FY 25

- **FY 25 Targets :**
  - ~ 700 Inspections
  - 60% Construction
  -  Programmed Inspections



# Important Annual OSHA Events

- **January 2:** Employers start submitting their OSHA injury & illness data via the Injury Tracking Application (ITA)
- **February 1:** Employers must post their Summary of injuries and illnesses OSHA 300A (**Feb 1-Apr 30**)
- **March 25-29:** Stand Up for Grain Safety Week
- **April 28:** Workers Memorial Day
- **May:** Fall Stand-Down Week
- **June:** Trench Safety Stand-Down Week
- **July:** Heat Illness Prevention Campaign
- **August:** Safe + Sound Week
- **August:** Labor Rights Week
- **September (TBA):** National Farm Safety and Health Week
- **September:** Construction Suicide Prevention Week

# Outreach Initiatives & Resources

- **Temporary Workers:**

<https://www.osha.gov/temporaryworkers>

- **Young Workers:**

<https://www.osha.gov/young-workers/resources>

- **Workplace Violence:**

<https://www.osha.gov/workplace-violence/prevention-programs>

- **Suicide prevention campaign:**

<https://www.osha.gov/preventingsuicides/>

# Compliance Assistance Program – OSHA Helping Employers FY 2023

- ✓ **22 million users** and **82 million page views** on [OSHA's website](#).
- ✓ **More than 382,000 subscribers** to OSHA's [QuickTakes](#) e-newsletter.
- ✓ **296,800 calls** (including 21,200 in Spanish) to the OSHA 800 number.
- ✓ **10,300 questions submitted** by [email](#) (3,200 forwarded to State Plan States)
- ✓ **20,500 Consultation Program** visits for small and medium-sized employers, covering
- ✓ **1,070,000 workers** and resulting in the identification and correction of **93,000** hazards.
- ✓ **OSHA's Compliance Assistance Specialists and other field staff** conducted more than **8,200 outreach activities** reaching more than **3.8 million people**.
- ✓ **73,000 students trained** through OSHA's [Susan Harwood Training Grant Program](#).
- ✓ **1,341,000 students taught** through [OSHA's Outreach Training Program](#) (OSHA 10- and 30-hour cards).
- ✓ **New OSHA publications**, including 47 fact sheets, 29 brochures, 23 QuickCards, 13 posters, 61 cards, 35 videos, and 10 public service announcements.

# Compliance Assistance Specialist



- ✓ Compliance Assistance Specialists can provide general information about OSHA compliance assistance resources and how to comply with OSHA standards. They are available for seminars, workshops and events.
- ✓ Promote and help implement OSHA's cooperative programs: **Voluntary Protection Programs (VPP), Partnerships Program, and Alliances Program.**

# Cooperative Programs

- Alliance Program
- OSHA Strategic Partnership Program
- Voluntary Protection Programs (VPP)
- On-Site Consultation Program & Safety and Health Recognition Program (SHARP)



<https://www.osha.gov/cooperativeprograms>



# University of South Florida (USF) Consultation Services



## Consultants will:

- Help employers recognize hazards in the workplace;
- Assist employers in developing or maintaining effective safety and health management programs;
- Suggest general approaches or options for solving a safety or health problem;
- Identify resources available if an employer needs further assistance;
- Provide employers with a written report summarizing findings; and
- Provide safety and health training.

<https://www.osha.gov/consultation>

1-866-273-1105

[USFSafetyFlorida@usf.edu](mailto:USFSafetyFlorida@usf.edu)

*"Our entire safety culture has become more focused and has improved dramatically."*

Gus Cagigas, Portus Stevedoring

**USF**<sup>®</sup>  
HEALTH

If you are an employer who is interested in a free consultation visit, please contact us:

USF SafetyFlorida Consultation Program  
13201 Bruce B. Downs Blvd. - MDC 56  
Tampa, FL 33612  
[www.safetyflorida.usf.edu](http://www.safetyflorida.usf.edu)  
1-866-273-1105

Training courses in safety and health subjects are available from the USF OTI Education Center.

For more information, please visit  
[www.usfoticer.org](http://www.usfoticer.org)  
813-994-1195

**USF**<sup>®</sup>  
HEALTH

**FREE**  
*Safety and Health  
Consultation Services*

*A. U.S. Department  
of Labor Cooperative  
Program for Florida  
Small Business*



# OTI Education Centers

- Over 50 courses available in construction, general, and maritime industries
  - covers OSHA standards, recordkeeping, LOTO, machine guarding, confined space entry, fall protection and Outreach train-the-trainer
- **OTI Education Centers annually train over 55,000 students in over 4,500 classes**



# Safety Pays

## OSHA's SAFETY PAYS Program

### Safety Pays Tool

Estimate the effect of all injuries and illnesses on your business.

[Safety Pays Tool](#)

### Individual Injury Estimator

Find out how much a specific injury could cost your business.

[Individual Injury Estimator](#)

### Resources



Benefits of the OSHA  
On-Site Consultation  
Program  
An Economic Analysis  
Working Paper

August 1, 2018

[Benefits of the OSHA On-Site Consultation Program  
An Economic Analysis](#)

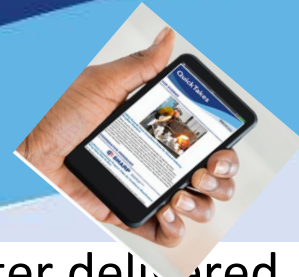
**How occupational injuries and illnesses can impact my company's profitability ?**

<https://www.osha.gov/safetypays>



# OSHA Publications

## OSHA QuickTakes



### Heat Illness:

<https://www.osha.gov/heat>

[https://www.osha.gov/sites/default/files/enforcement/directives/CPL\\_03-00-024.pdf](https://www.osha.gov/sites/default/files/enforcement/directives/CPL_03-00-024.pdf)

<https://www.osha.gov/sites/default/files/publications/heat-rulemaking-factsheet.pdf>

- **Free** OSHA e-newsletter delivered twice monthly to more than 300,000 subscribers
- **Latest news** about OSHA initiatives and products to help employers and workers find and prevent workplace hazards
- Sign up at [www.osha.gov/quicktakes](http://www.osha.gov/quicktakes)



### Spanish-Language Resources

<https://www.osha.gov/training/outreach/construction/spanish>

[www.osha.gov/publications](http://www.osha.gov/publications)

**Seguridad y Salud en el Trabajo**  
**¡ES LA LEY!**

Todos los trabajadores tienen el derecho a: Los empleadores deben:

- Un lugar de trabajo seguro y saludable.
- Decir algo si se perciben peligros o reportar una lesión o enfermedad.
- Recibir información sobre los peligros de los trabajos en su idioma.
- Pedir a la OSHA que investigue si el trabajo es seguro y saludable.
- Participar en la inspección de su lugar de trabajo.
- Presentar una queja si no están seguros de su lugar de trabajo.
- Ver cualquier cosa que los preocupa.
- Pedir copias de los registros de lesiones y enfermedades.

**PROTEJA A LOS TRABAJADORES DENTRO DE ZANJAS**

Evite los derrumbes de zanjas y salve vidas:

**INCLINE** o construya bancos en las paredes de zanjas,

**APUNTALE** las paredes de zanjas con soportes, o

**PROTEJA** las paredes de zanjas con cajas de zanjas

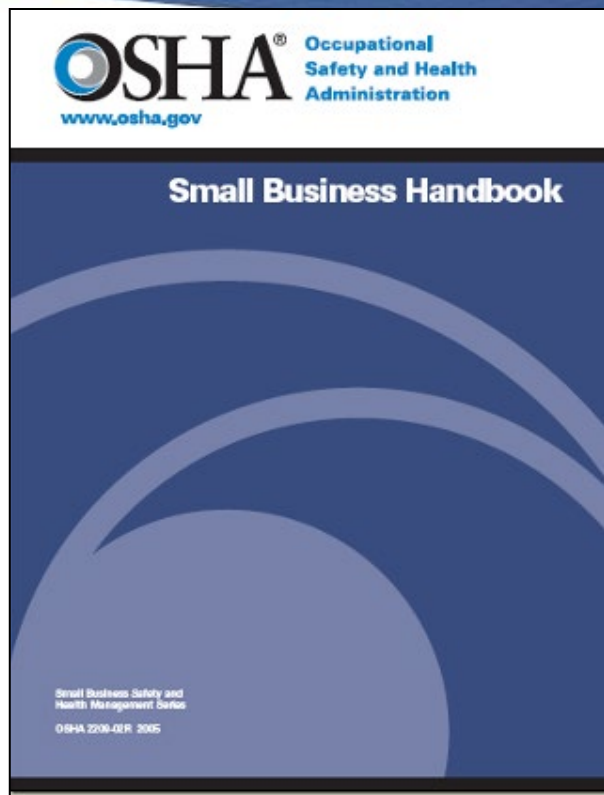
**Llame a OSHA**

**OSHA**  
Administración de Seguridad y Salud Ocupacional

1-800-321-OSHA (6742) • TTY 877-889-5627

[WWW.OSHA.GOV/TRENCHING](http://WWW.OSHA.GOV/TRENCHING)

# Help for Small Businesses: Publications



# Questions?



**Fort Lauderdale Area Office: 1000 S Pine Island Rd. Ste 100. 33324.**

**Duty Officer - 954-424-0242**

**Email Complaints: [FT-Lauderdale.OSHA@Dol.Gov](mailto:FT-Lauderdale.OSHA@Dol.Gov)**

**Toll Free Hotline: 1-800-321-OSHA (6742)**

**S&H Complaints: [OSHA Online Complaint Form](#)**

**S&H questions (No complaints), E-mail, via OSHA's website: <https://www.osha.gov/form/ecorrespondence>**

**For Compliance Assistance Questions:**

**Leny Chango, CAS, OSHA Fort Lauderdale**

**Email: [Chango.Leny@Dol.Gov](mailto:Chango.Leny@Dol.Gov)**

**Direct - 954-423-0382**

**Thank You !**